

# The BEAT News!

"because an informed and engaged public is the environment's best defense"

January 4, 2022

Hi Friend,

Have you been out on a walk, snowshoe, or ski and come across tracks or animal sign and wondered what animal(s) could have been responsible? Well, help may be on the way!

BEAT and **Northeast Wildlife Trackers** are collaborating on an evening of track/sign I.D. based on photos from YOU! If you would like to participate in the tracking evening, now is the time to get outside with your camera, take photos, and submit. **Check out the details below** in our Spotlight section, where you can also find more wildlife tracking content.

We hope you all have had a delightful start to the new year and look forward to seeing you soon!

*With gratitude,  
Jane, Rose, Jake, Noah, and Chelsey*

## \*SPOTLIGHT\*

### WILDLIFE TRACKING EVENTS & CONTENT

#### Photo Submission Guidelines for BEAT/Northeast Wildlife Trackers Event:

1. PLEASE have some sort of gauge in the photo so there is a sense of size. This could be a ruler (ideal), a pencil, your hand, or boot—something with a known length.
2. Check that the picture is in focus; take several and pick the best.
3. Perhaps the individual track does not have good detail; if so, take long view photo(s) of the trail as well.
4. It can be helpful to have both closeup and long view photos.
5. Time of day and temperature information is appreciated.
6. Send to [pjcanaan@outlook.com](mailto:pjcanaan@outlook.com) with heading "Tracks"
7. Submissions should be sent no later than January 28th.

**\*\*We can't guarantee that all photos will be shown; it depends on the amount submitted, quality of photo, and discussion time.**

**\*\*\*A specific date has not yet been scheduled for this event; however, it will likely take place during the 2nd or 3rd *full-week* of February. More event details will be posted to **BEAT's event calendar** soon.**

#### *Wandering and Wondering in the Winter Woods: Wildlife Tracking with Richard Greene*

Does February feel like a long wait for an engaging track & sign event? We think so! Join us on January 18th at 6PM for our monthly Pittsfield Green Drinks gathering to hear Richard Greene talk about his experience with wildlife tracking and the many places this passion has taken him. He will also present a slide show and narrative from his collection of wintertime track and sign photos! You can find more details on this event [here](#), and you can register for it [here](#).

#### Wildlife Videos in and Around the Berkshires

Need a refreshing dose of your favorite local animals cohabitating, dueling for food, and being delightfully cute? We have great news for you! In late April of last year, BEAT complied videos from our wildlife trackers, volunteers, and partners that they had collected in and around the Berkshires. There are now 23 videos on the channel covering a wide variety of wildlife behavior that you can view [here](#).

## 2021 ANNUAL NEWSLETTER

If you haven't already, check out our annual newsletter for 2021.

## IN THE NEWS

### A "Gorges" Comeback for Peregrine Falcons

Andy Johnson | *Living Bird*





"Last year, Peregrine Falcons returned to a spectacular gorge near the Cornell Lab's hometown of Ithaca, New York—the same site where Lab founder Arthur Allen had studied the species a century ago. No falcons had nested at the site since the 1940s, but in 2020 a Cornell Lab cinematographer discovered and documented a new pair as they successfully fledged young amid Taughannock's towering cliffs." [See Photos & Read More.](#)



## Winter is back — but not with a vengeance

Clarence Fanto | *The Berkshire Eagle*

"It looked and felt more like late March or early April this past week, with a mini-mud season and daily pea-soup fogs worthy of a classic London thriller. [...] Temperatures for the month scored a whopping 5.5 degrees above normal at Pittsfield Municipal Airport. [...] New England is warming significantly faster than the global average, and that rate is expected to accelerate as more greenhouse gases are pumped into the atmosphere and dangerous warming trends fuel climate change. A temperature data analysis going back more than a century documents shorter winters and longer summers, jeopardizing much of the region's unique ecology, economy and cultural heritage." [Read More.](#)



## How Many New Species? 2021 Update

Charley Eiseman | *Bug Tracks*

"...for my final post of the year, I thought it would be fun to put together a list of all the species that have been either described in papers I coauthored or described based (at least in part) on specimens I collected. [...] What limits the number of new species I'm able to help describe is a shortage not of "new" species to name, but of time that my collaborators and I have available to devote to this task. So the take-home message from this post should not be 'Wow, look at all the new species Charley has found!', but rather, 'Wow, we have so much left to learn about our natural surroundings, and we need to support more funding for taxonomy!'" [See Photos & Read More.](#)



## US becomes world's top LNG exporter for first time ever

Stephen Stapczynski & Sergio Chapa | *Al Jazeera*

"...the U.S. became the world's No. 1 exporter of liquefied natural gas for the first time ever last month, as deliveries surged to energy-starved Europe. [...] A shale gas revolution, coupled with billions of dollars of investments in liquefaction facilities, transformed the U.S. from a net LNG importer to a top exporter in less than a decade. Gas production has surged by roughly 70% from 2010 and the nation is expected to have the world's largest export capacity by the end of 2022 once Venture Global LNG's Calcasieu Pass terminal comes online." [Read More.](#)



Photo credit: *Opus Kinetic*

## Gas: What's the big deal?

Stuart Braun | *DW News*

"...Natural gas is a combustible hydrocarbon mostly made up of methane — which is [around 28 times](#) more polluting than CO2 and is prone to leak from gas pipelines and infrastructure. It's a non-renewable fossil fuel found deep in the ground amid shale and rock — and often close to petroleum. We use it to make energy but also as a chemical feedstock for plastics and fertilizers, and our current boundless appetite for the stuff means that natural gas reserves could run out in about 50 years." [Read More.](#)

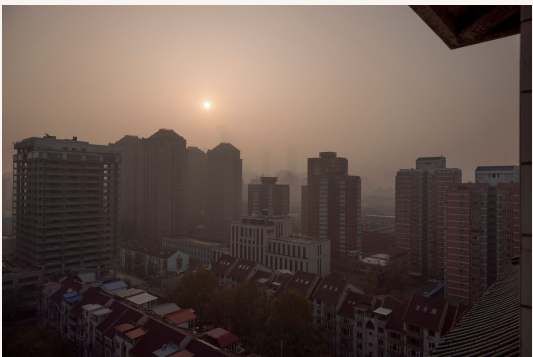




## Decades after Congress' order, toxics still contaminate millions of schools

Olivia Backhaus | *Environmental Working Group*

"More than 40 years ago, Congress banned harmful polychlorinated biphenyls, or PCBs, from schools. And it's been 37 years since Congress directed schools to address asbestos. But today, millions of schools continue to be plagued by these and other toxic chemicals." [Read More.](#)



## Beijing meets state air quality standards for first time in 2021

David Stanway | *Reuters*

"The Chinese capital Beijing met state air quality standards for the first time last year, officials said on Tuesday, a milestone lauded by experts, who also warned that pollution remained high in one of the world's most populous cities. [...] Yu Jianhua, deputy head of Beijing's environmental protection bureau, described the city's efforts over the last decade, as well as the speed of its improvements, as "unprecedented". [...] 'Further improvement will require a shift from coal and oil to clean energy,' said Lauri Myllyvirta, lead analyst at the Center for Research on Energy and Clean Air." [Read More.](#)



## 2021: Year in Review for Climate Change Wins and Losses

Nick Cunningham | *DeSmog*

"As 2021 comes to a close, we look back on a year that was full of climate chaos, relentless oil industry propaganda, and frustrating progress on reducing greenhouse gas emissions. But 2021 also saw a significant number of victories against the expansion of the fossil fuel industry in the U.S. and around the world, and some glimmers of hope for climate action." [See Photos & Read More.](#)



## Biodiversity loss and climate change are partners in environmental crime

Marie Narlock | *Marin Independent Journal*

"...Biodiversity supports everything we need to survive: air, water, food, medicine, shelter and even the economy. It's all the life that coexists in an ecosystem, from microorganisms to plants to fungi to animals (including humans). Ecosystems can be super big or super small — as expansive as a desert and as tiny as a tidepool. String them all together and you have planet Earth. Each species in an ecosystem plays a role in an intricate, balanced, beautiful “web of life.” Plants are particularly important. When one species struggles or disappears, the ripple effect can be serious and irreversible. [...] Unfortunately, the situation worldwide is alarming, as biodiversity is in steep decline. Globally, 1 million plants and animal species are threatened with extinction. We’ve altered 75% of land and 66% of marine locales. There are 20% fewer land-based native plants. Plastic pollution is 10 times worse than it was in 1980. Fertilizer runoff has created more than 400 ocean dead zones." [Read More.](#)



### ~OPPORTUNITY TO SUPPORT BEAT~

**Tommy's Compost** is a local composting service that offers residential and commercial compost pick-up services year-round, as well as Christmas tree composting on January 9th.

By signing up for Tommy's Compost not only will you reduce your carbon footprint and contribute to sustainability, but you will also support a local small business AND support BEAT! Because whenever you sign up for Tommy's Compost and use the code **1FORBEAT** at checkout, BEAT receives \$1.

Currently, Tommy's Compost is serving the Pittsfield, Hinsdale, Dalton, Windsor, Lenox, Cheshire and surrounding areas. Interested in using Tommy's but located outside of their service area? When three people sign up from an out-of-area location in the Berkshires, Tommy's is able to begin servicing that new area!

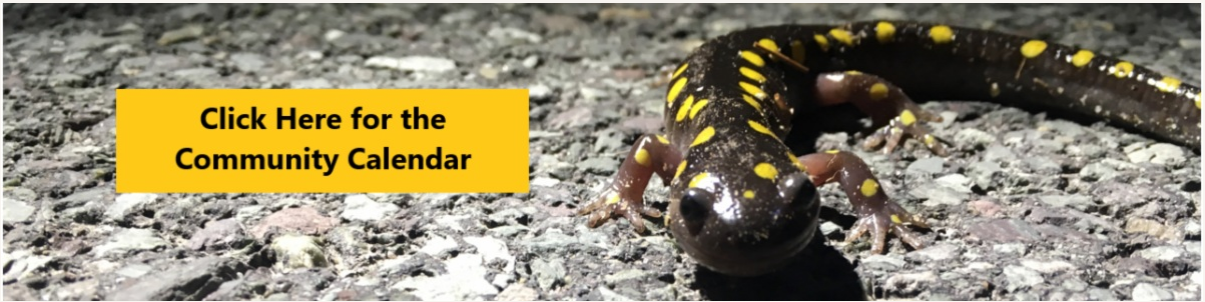
If you're interested in signing up for Tommy's Compost, you can check out their [website](#) or contact them through [email](#).



The fight against fossil fuels is here!

SUBSCRIBE HERE for the No Fracked Gas in Mass newsletter

More articles on climate and energy in the *Weekly News Check-In*



Click Here for the  
Community Calendar

## COMMUNITY CALENDAR

We list events from a variety of local and regional organizations and individuals.

### Events with BEAT:

*Check back next week!*

### Community Calendar:

THURSDAY, JANUARY 6th

**More Than a Land Acknowledgement** – Online

SATURDAY, JANUARY 8th

**Winter Wildlife Tracking**

**Tracking Workshop: Cats and Canines (Mass Audubon)**

SUNDAY, JANUARY 9th

**Early-Winter Tracking Programs**

**Great Hall Exhibit Reception: The Northfield Chateau – Remembered, Revisited**

MONDAY, JANUARY 10th

**EarthTalks: Michael Mann to discuss COP26 and path to net zero emissions** – Online

**2022 Legislation and Lobbying Training (MA Sierra Club)** – Online

TUESDAY, JANUARY 11th

**Invasive Earthworms and their Effect on Forest Soils and Vegetation** – Online

**On Trees: A Conversation with Peter Wohlleben, Jessica J. Lee, and Sumana Roy** –

Online

**Misunderstood Wildlife: Wasps** – Online

WEDNESDAY, JANUARY 12th

**SuperSanctuary Butterfly Club** – Online

[See calendar for more](#)



Click Here for the Jobs Board

## JOBS

We list jobs related to the environment from a variety of organizations.

**Education Coordinator – School and Summer Environmental Education Programs** | Mass Audubon |

Lenox (posted 1/4)

**Director of Land Protection** | North County Land Trust | Leominster/Hybrid (posted 1/4)

**Legislative Intern, Communication Intern, Transportation Intern, Boston Climate Organizing Intern** |

Massachusetts Sierra Club | Remote (deadline 1/10)

**Campaign Associate** | U.S. PIRG | Boston (deadline 1/14)

**Field Office Director** | Fund for the Public Interest (deadline 1/14)

**Clean Water Director for Community Action Works** | The Public Interest Network | Boston (deadline

1/14)

**Marine Biologist/At-Sea Monitor** | East West Technical Services | Gloucester/New Bedford (deadline

1/17)

**Seasonal Ecology Field Assistant** | Science and Stewardship | Nantucket (deadline 1/28)

**Ecological Restoration Specialist – Ecohydrology** | Massachusetts Division of Ecological Restoration |

Boston (deadline 1/28)

**Ecological Restoration Grants Manager** | Massachusetts Division of Ecological Restoration | Westfield or

Boston (deadline 1/28)

**ACE: Biological Member(s) – Monomoy National Wildlife Refuge** | American Conservation Experience |

Chatham (deadline 1/30)

**ACE: Biological Member – Eastern Massachusetts National Wildlife Refuge** | American Conservation

Experience | Sudbury (deadline 1/30)

**Assistant Director, Fundraising and Community Engagement** | Berkshire Natural Resources Council |

Hybrid/Berkshires

**Grants Specialist: Foundation, Corporate, and Government Awards (half-time)** | Berkshire Natural

Resources Council | Hybrid/Berkshires

**Volunteer and Outreach Assistant (part-time)** | Berkshire Natural Resources Council |

Hybrid/Berkshires

**Conservation Technician** | Housatonic Valley Association (HVA) | Stockbridge

**Forest Program Associate** | National Audubon Society | Hybrid/Troy, NY



**\*\*\*Are you a non-profit environmental organization looking for willing, capable, and unpaid summer interns?**

The Center for Environmental Studies at Williams College provides funding to students to pursue unpaid environmental summer internships with non-profit organizations and governmental agencies, supervised research, and creative endeavors. Learn more about this summer program and how you can get involved [here](#).

[Click here for more jobs](#)

### Environmental Monitor

December 22, 2021

The Environmental Monitor provides information on projects under review by the Massachusetts Environmental Policy Act (MEPA) office, recent MEPA decisions of the Secretary of Energy & Environmental Affairs, and public notices from environmental agencies.

**Berkshire Index:**

Lenox – [Lenox Valley Waste Transfer Facility](#) – ENF – submitted 12/22/21

**Pioneer Valley Index:**

Wales – [Notice of Application for a 401 Water Quality Certificate](#) – posted 12/22/21

Agawam – [Agawam Distribution Facility](#) – ENF – comments due 12/28/21

Whately – [Hannum Family Property](#) – ENF – comments due 12/28/21

Westfield – [Westfield Target Supply Chain Facility](#) – ENF – comments due 1/11/22

Cummington – [Bryant Cemetery Expansion](#) – ENF Certificate – Does not require an Environmental Impact Report – issued 12/10/21

**Statewide Index:**

[New MEPA Protocol Relative to Environmental Justice](#)(click on link, then attachments tab) – posted 12/22/21

**We couldn't do our work without you.  
Thank you for helping protect the environment!**

**~ Support our programs & our future today ~**

### Public Notices

Public Notices listed here are from a variety of sources, from town conservation commissions and select boards to state and federal agencies. These listings are for Berkshire, Hampshire, Hampden, and Franklin counties. Listings are only posted if they are environmental in nature. You can find all public notices for Massachusetts [here](#).

**BEAT Public Notices PAGE**



Berkshire Environmental Action Team  
20 Chapel St., Pittsfield, MA 01201  
(413) 464-9402  
[team@thebeatnews.org](mailto:team@thebeatnews.org)  
[www.thebeatnews.org](http://www.thebeatnews.org)

See what's happening on our social sites:

