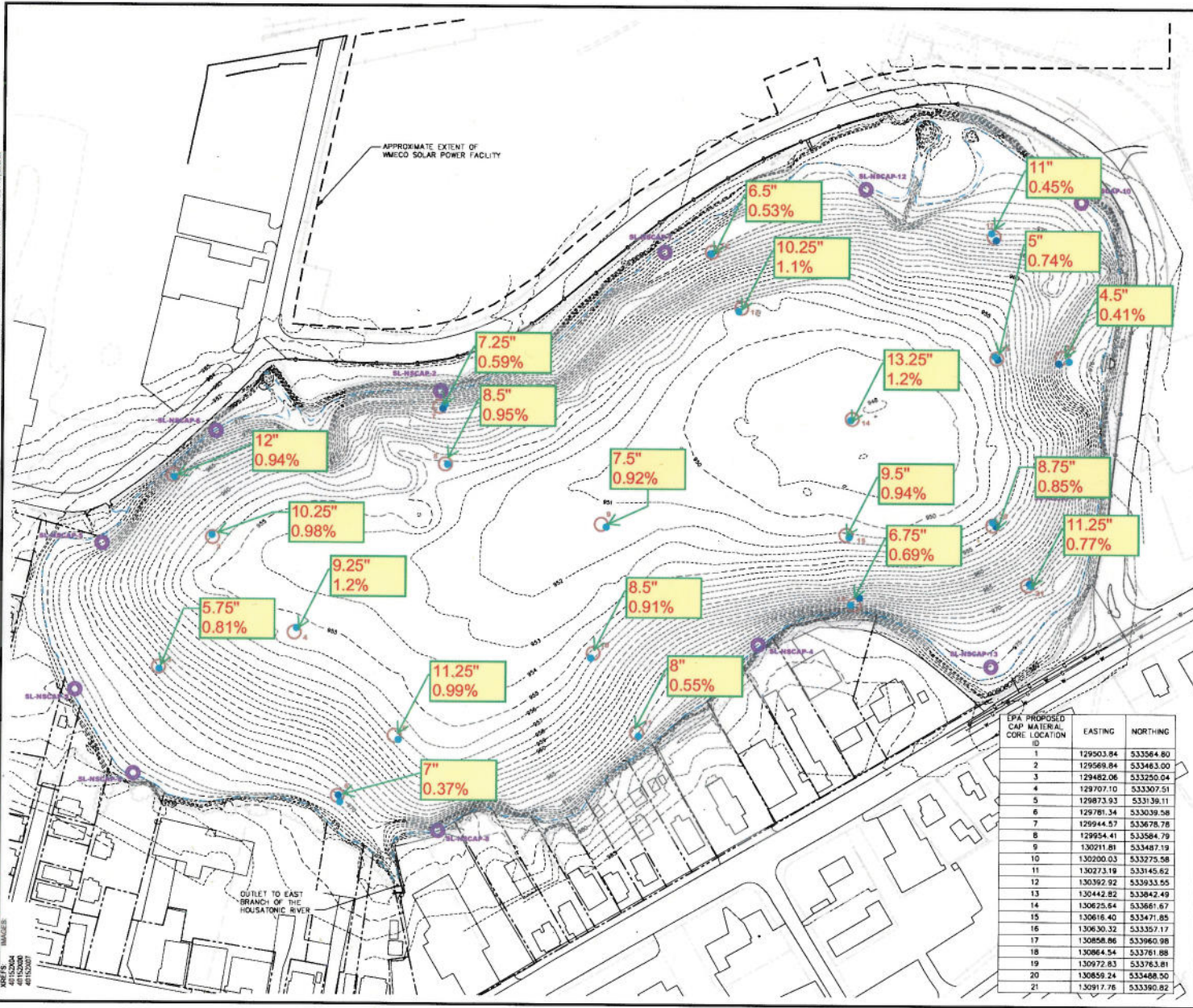


CITY OF PITTSFIELD DIVISION OF PUBLIC WORKS 100 WASHINGTON ST. PITTSFIELD, MA 01201  
 DATE: 04/15/2007  
 DRAWN BY: J. KELLY  
 CHECKED BY: J. KELLY  
 PROJECT: SILVER LAKE WASTEWATER TREATMENT PLANT  
 SHEET: 1 OF 1  
 SCALE: AS SHOWN  
 DRAWING NO.: 07-001-001-001



GRAPHIC SCALE  
 0 50 100  
 DRAFT

GENERAL ELECTRIC COMPANY  
 PITTSFIELD, MASSACHUSETTS  
 SILVER LAKE AREA

**DURING-CONSTRUCTION AND  
 POST-CONSTRUCTION CAP  
 MONITORING LOCATIONS**

**ARCADIS**

FIGURE  
**1**

**TABLE 1  
INTERIM CAP SAMPLING (IN-PLACE, EIGHT LIFTS) TOC RESULTS  
SILVER LAKE AREA  
GENERAL ELECTRIC COMPANY - PITTSFIELD, MASSACHUSETTS  
(Results are presented in dry weight parts per million (ppm), unless otherwise noted)**

Sample ID:	SL-8CAP-1	SL-8CAP-2	SL-8CAP-3	SL-8CAP-4	SL-8CAP-5	SL-8CAP-6	SL-8CAP-7	SL-8CAP-8	SL-8CAP-9	SL-8CAP-10	SL-8CAP-11
Sample Depth(Inches):	0-10	0-8.25	0-3.75	0-7.25	0-9.25	0-5	0-5.25	0-6.5	0-5.5	0-6.5	0-6
Parameter	Date Collected:	07/26/13	07/26/13	07/26/13	07/26/13	07/26/13	07/26/13	07/26/13	07/26/13	07/26/13	07/26/13
TOC - Replicate 1	11000	10000	8600	12000	9600	3800	5000	9200	11000	12000	5500
TOC - Replicate 2	8500	9000	7900	12000	9500	3600	6900	12000	8000	8500	4300
TOC - Replicate 3	8900	9700	7300	12000	10000	3600	5900	8600	8500	7400	6300
TOC - Replicate 4	9500	10000	8800	NA	9900	NA	NA	8000	NA	8800	5900
TOC - Average	9400	9800	8100	12000	9900	3700	5900	9500	9200	9100	5500
TOC - Average (%)	0.94%	0.98%	0.81%	1.2%	0.99%	0.37%	0.59%	0.95%	0.92%	0.91%	0.55%
TOC - % RSD	10	6.3	8.5	2.1	4.1	2.8	16	19	18	19	15

Sample ID:	SL-8CAP-12	SL-8CAP-13	SL-8CAP-14	SL-8CAP-15	SL-8CAP-16	SL-8CAP-17	SL-8CAP-18	SL-8CAP-19	SL-8CAP-20	SL-8CAP-21
Sample Depth(Inches):	0-4.5	0-8.25	0-11.25	0-7.5	0-4.75	0-9	0-3	0-2.5	0-6.75	0-9.25
Parameter	Date Collected:	07/24/13	07/24/13	07/24/13	07/24/13	07/24/13	07/24/13	07/24/13	07/24/13	07/24/13
TOC - Replicate 1	6000	11000	13000	9300	6700	4900	7900	4600	7800	7900
TOC - Replicate 2	4400	11000	11000	9200	6600	4200	8100	3400	8700	7600
TOC - Replicate 3	5300	11000	12000	9600	7600	5000	6200	4300	9100	7500
TOC - Replicate 4	NA	NA	12000	NA	6800	4100	7500	NA	8600	7800
TOC - Average	5300	11000	12000	9400	6900	4500	7400	4100	8500	7700
TOC - Average (%)	0.53%	1.1%	1.2%	0.94%	0.69%	0.45%	0.74%	0.41%	0.85%	0.77%
TOC - % RSD	15	1.6	6.9	2.1	7.9	9.9	12	16	6.3	2.5

**Notes:**

1. Samples were collected by ARCADIS and submitted to Pace Analytical Services Inc. for analysis of total organic carbon
2. RSD (%) - Percent relative standard deviation.